



# BAYSHORE DRIVE PEDESTRIAN CONNECTION BAYSHORE TO SUGDEN REGIONAL PARK

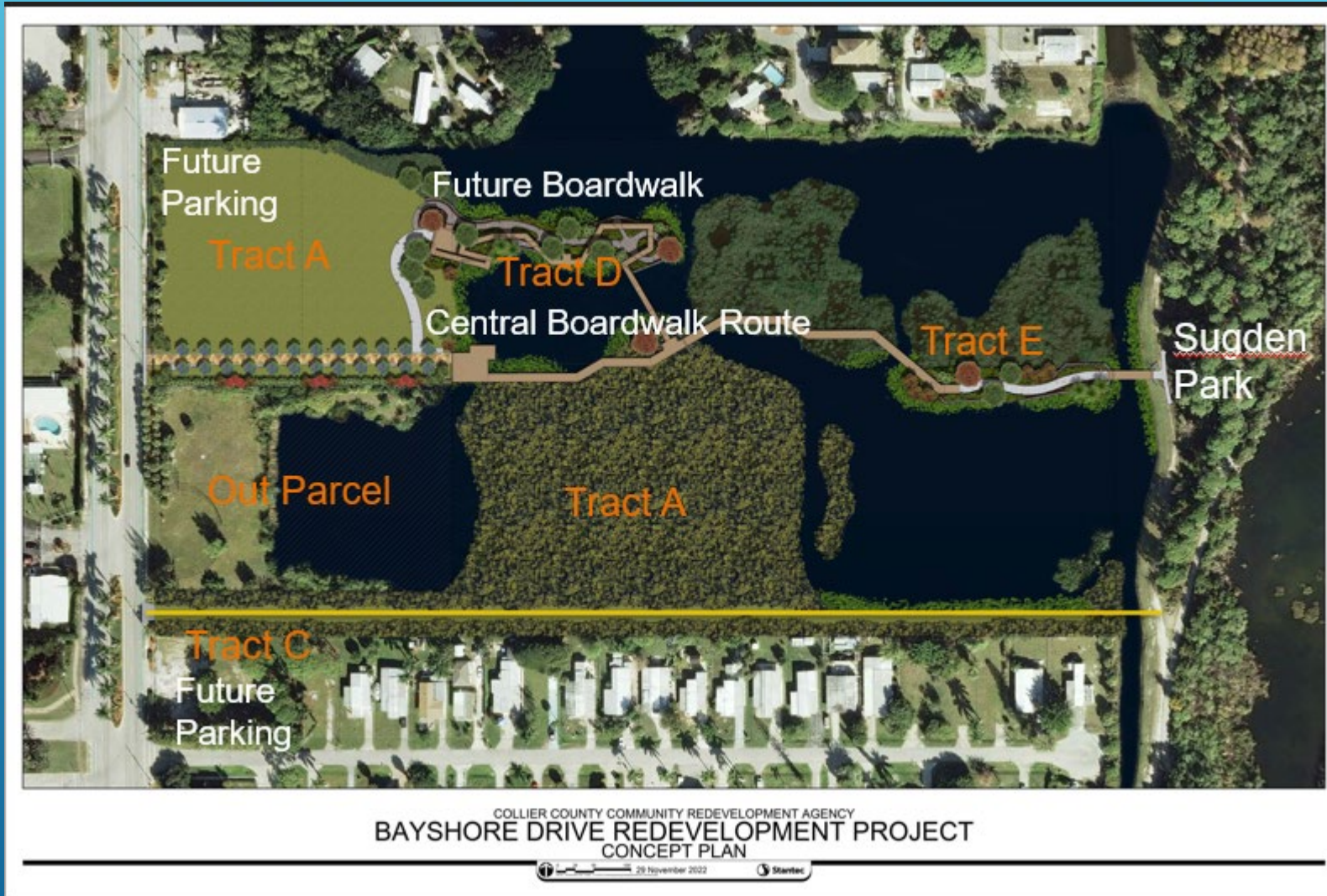
March 14, 2023



Bayshore Gateway Triangle CRA • Bayshore Beautification MSTU  
Haldeman Creek MSTU



# Central Boardwalk



- Consistent with MUPD
- Stormwater treatment train
- Direct Pedestrian Access to both Tract As
- Width – 12 to 15 feet
- Better managed wetlands
- Capitalizes on nature
- Less impact to future development opportunities
- Estimated Cost - \$2,730,000





# COMMUNITY ENGAGEMENT

August 17, 2022 – BGTCRA Advisory Board recommended approval of conceptual plan – Central Alignment

December 6, 2022 – BGTCRA Advisory Board recommended approved of 60% Plans – Central Alignment

## December 13, 2022 – BCC/CRA Direction

January 11, 2023 – Advisory Board Reviewed options and recommended approval of Central Board walk

January 21, 2023 – Onsite Neighborhood Meeting  
50+ attended

125 comment cards

117 Central Board Walk

1 No Pathway

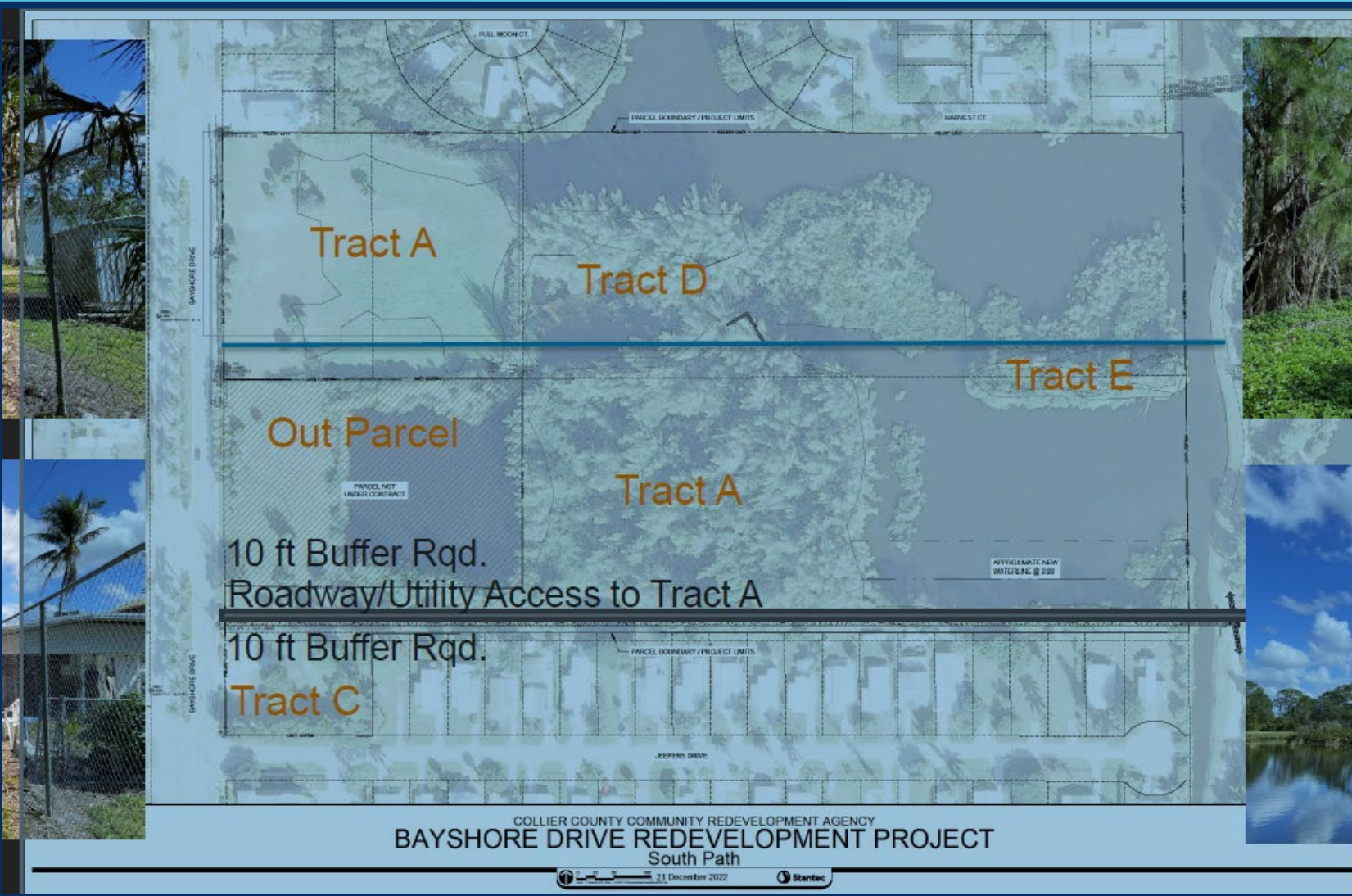
7 No response



Bayshore Gateway Triangle CRA • Bayshore Beautification MSTU  
Haldeman Creek MSTU



# Southern Boardwalk

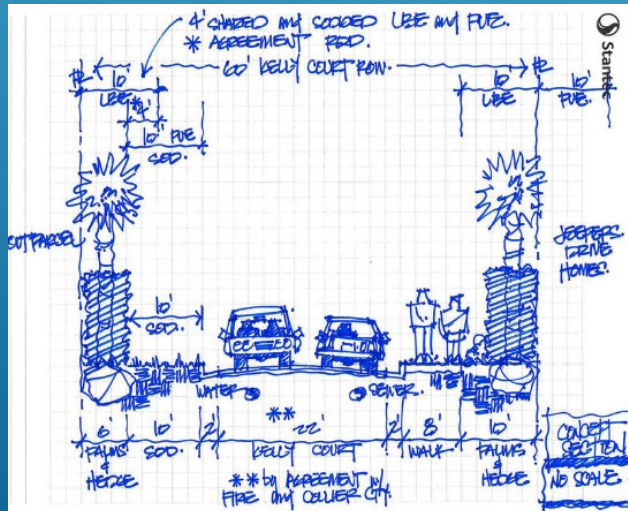


- Not Consistent with MUPD
- Limited Stormwater treatment
- No Pedestrian Access to both Tract As
- Width – Varies 8 to 12 feet
- Additional Permitting – wetland Impacts
- Impact to future development opportunities
- Impacts to adjacent residents
- Estimated Cost:
  - - \$2,880,000
    - \$2,558,000
    - \$ 322,000





# Jeepers Street – Residential Concerns



# Parking Options

## North Parking Lot – 20 Stalls Shown



COLLIER COUNTY COMMUNITY REDEVELOPMENT AGENCY  
BAYSHORE DRIVE REDEVELOPMENT PROJECT  
Parking Lot Option B

12 January 2023

Startec

- Located within Track A – North
- Open stormwater
- Maintains flexibility for future development
- Estimated Design - \$62,250
- Estimated Construction - \$415,000
- Low Impact Design



Bayshore Gateway Triangle CRA • Bayshore Beautification MSTU  
Haldeman Creek MSTU



# Parking Options

## South Parking Lot – 17 Stalls Shown



COLLIER COUNTY COMMUNITY REDEVELOPMENT AGENCY  
BAYSHORE DRIVE REDEVELOPMENT PROJECT  
Parking Lot Option A

12 January 2023



- Located at Jeepers and Bayshore Drive
- Open Stormwater
- Estimated Design Costs - \$67,500
- Estimated Construction Cost - \$450,000
- Low Impact Design

Additional 10 spaces with closed drainage  
Additional cost \$75,000



Bayshore Gateway Triangle CRA • Bayshore Beautification MSTU  
Haldeman Creek MSTU

# QUESTIONS



Bayshore Gateway Triangle CRA • Bayshore Beautification MSTU  
Haldeman Creek MSTU